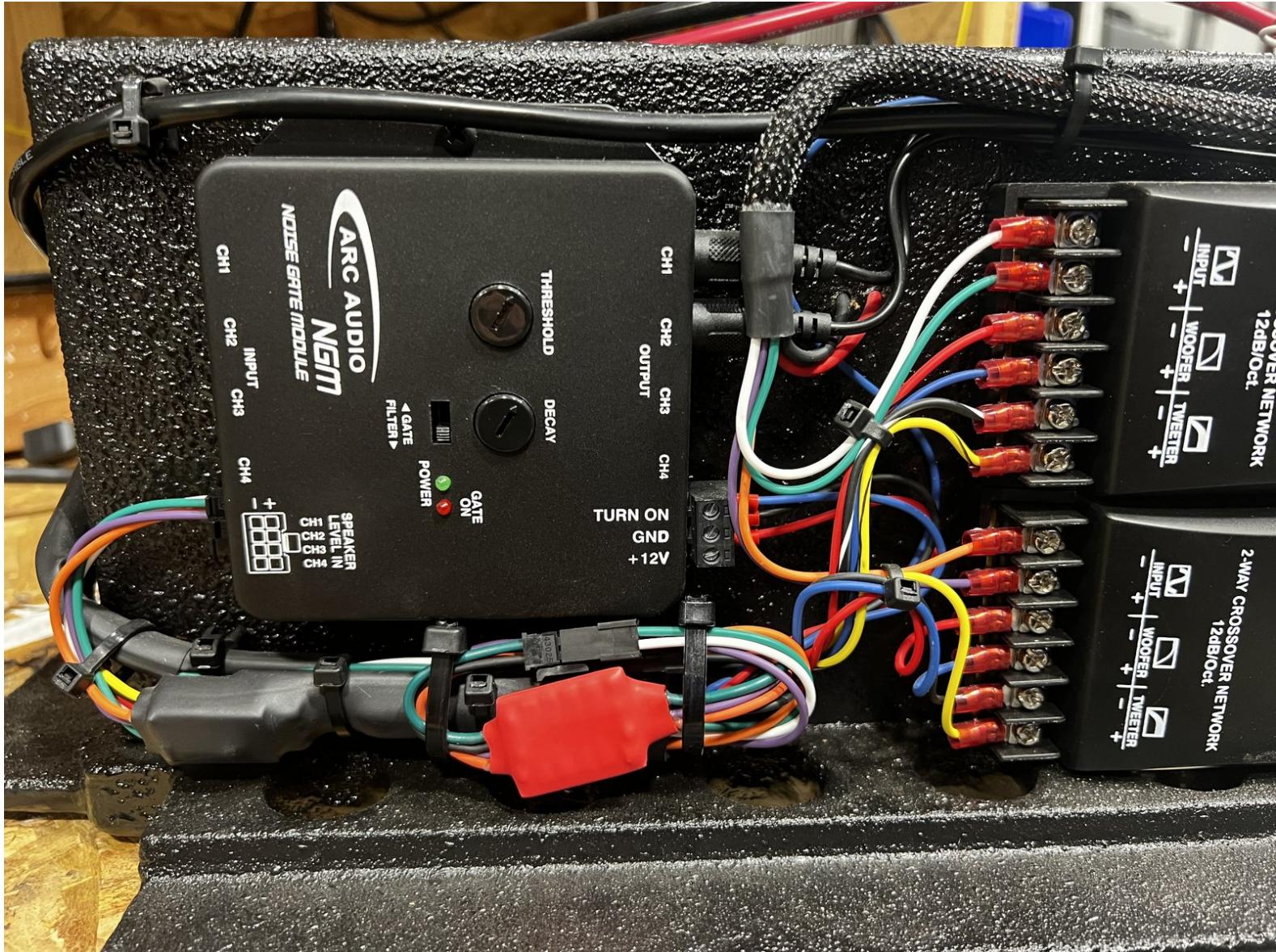




Beatbox Resistor Installation

Written By: John Kronuch



 **TOOLS:**

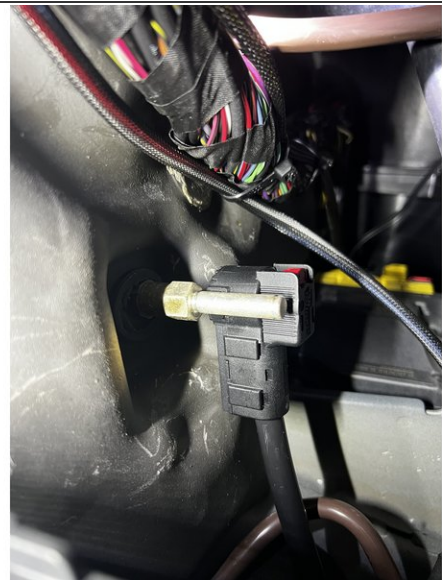
- E12 External Torx Socket (1)
 - Socket Wrench 3/8" Drive (1)
 - Wire Cutters (1)
 - 3/8" Drive Extension - 3" (1)
 - Torque Wrench 3/8" Drive (1)
-

Step 1 — VS30 Battery Disconnect

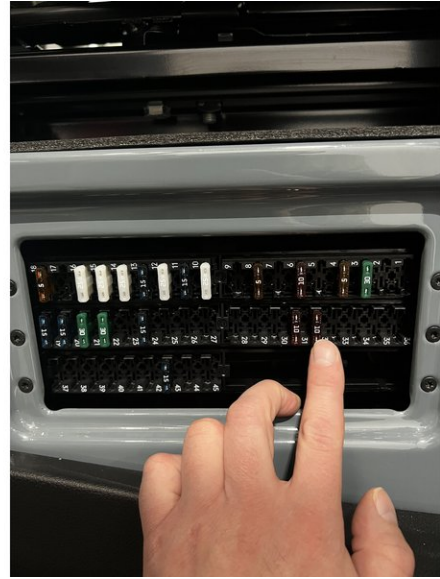


- Remove battery ground disconnect access cover to expose battery ground disconnect

Step 2



- Depress the red tab on the battery ground disconnect, and pull to remove from ground stud

Step 3

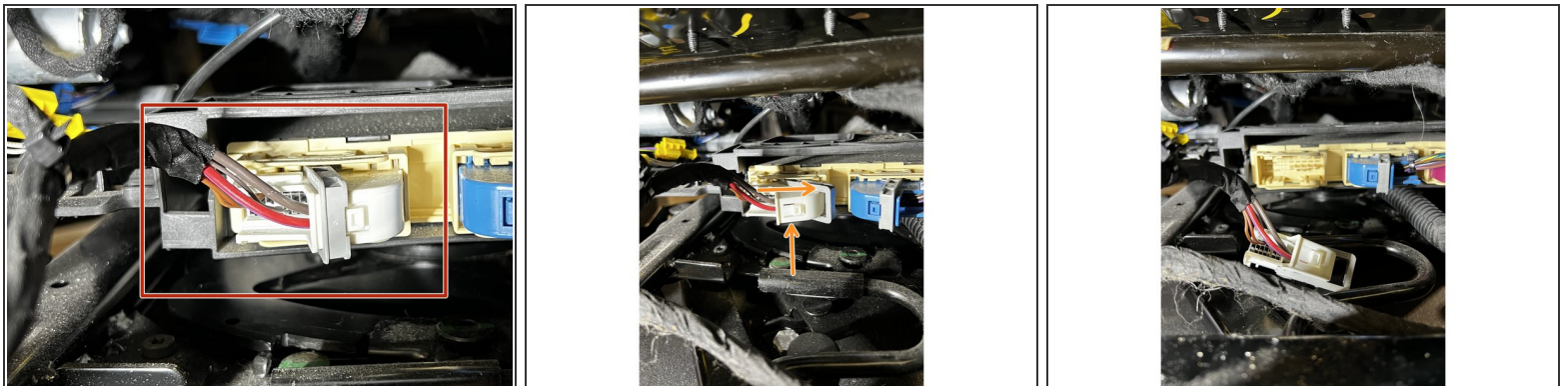
- Remove the fuse panel cover from the driver side seat base to expose fuse panel
- Locate and remove fuse #32

Step 4 — Seat Wire Harness Disconnection



- Disconnect the yellow plug for the seat wire harness by depressing the tabs on each side, and pulling connector out.
- ⓘ Tabs are depressed inwards, towards the center of the plug.
- Remove seat wire harness from seat rails by unclipping securement clips along the seat rails.
- ⚠ If equipped with power seats, you will need to adjust the seats to allow them to swivel PRIOR to disconnecting the battery.

Step 5 — Disconnecting Power Seat Harness



- ⓘ If you van does not have power seats, skip to the next step.
- Located the harness for power seats on the module under the seat.
- To disconnect the plug, depress the locking tab, and move the locking lever to the right to release the plug from the module.

Step 6 — Seat Wire Harness Removal



- Route seat wire harness and the power seat harness (if equipped) through the opening in the seat swivel.

Step 7 — Seat Removal



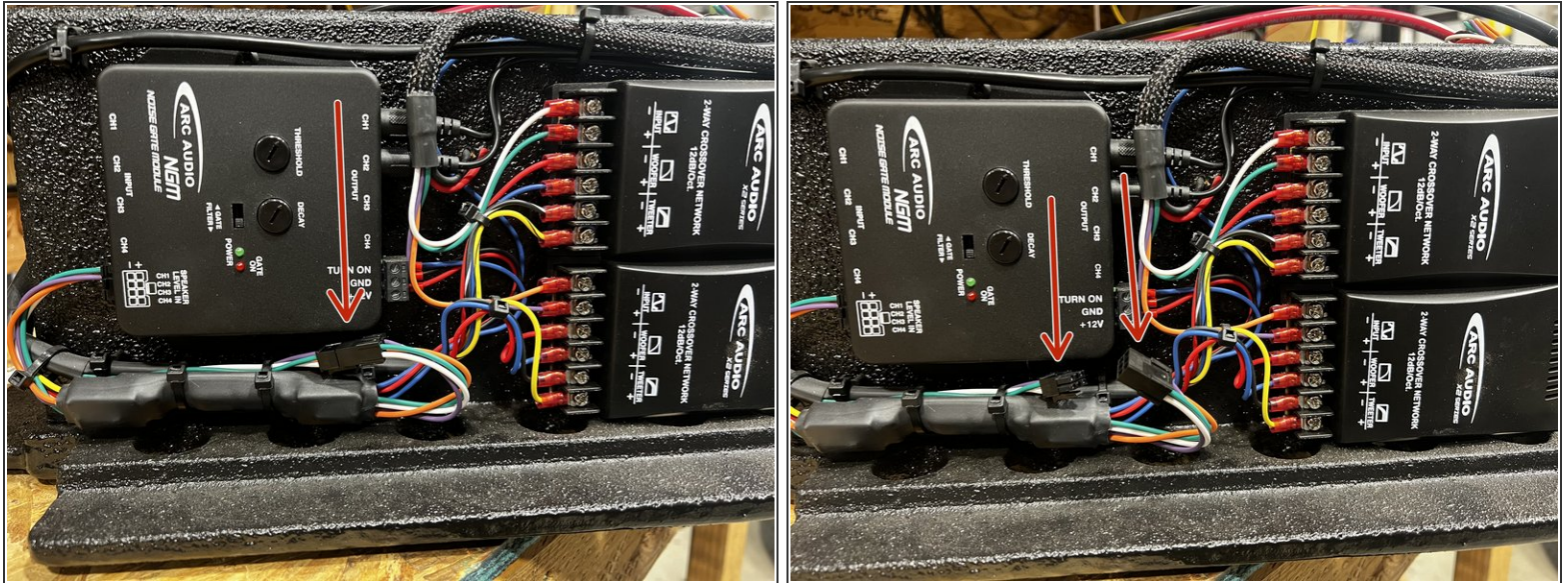
- Using the E12 Torx socket and socket wrench, begin removing the 4 seat bolts that secure the seat to the seat base.
- ⓘ It will be necessary to rotate the seat to access all the seat bolts.
- Once the 4 seat bolts have been removed, the seat can be lifted out of the vehicle.
- ⓘ Adjust the seat back to the upright most position to make the seat easier to remove from the van.
- ⚠ Take care to not scratch the door panel or the B pillar on the van when removing the seat. Masking tape can be used on the seat base to help prevent damage.

Step 8 — Accessing Front of BeatBox



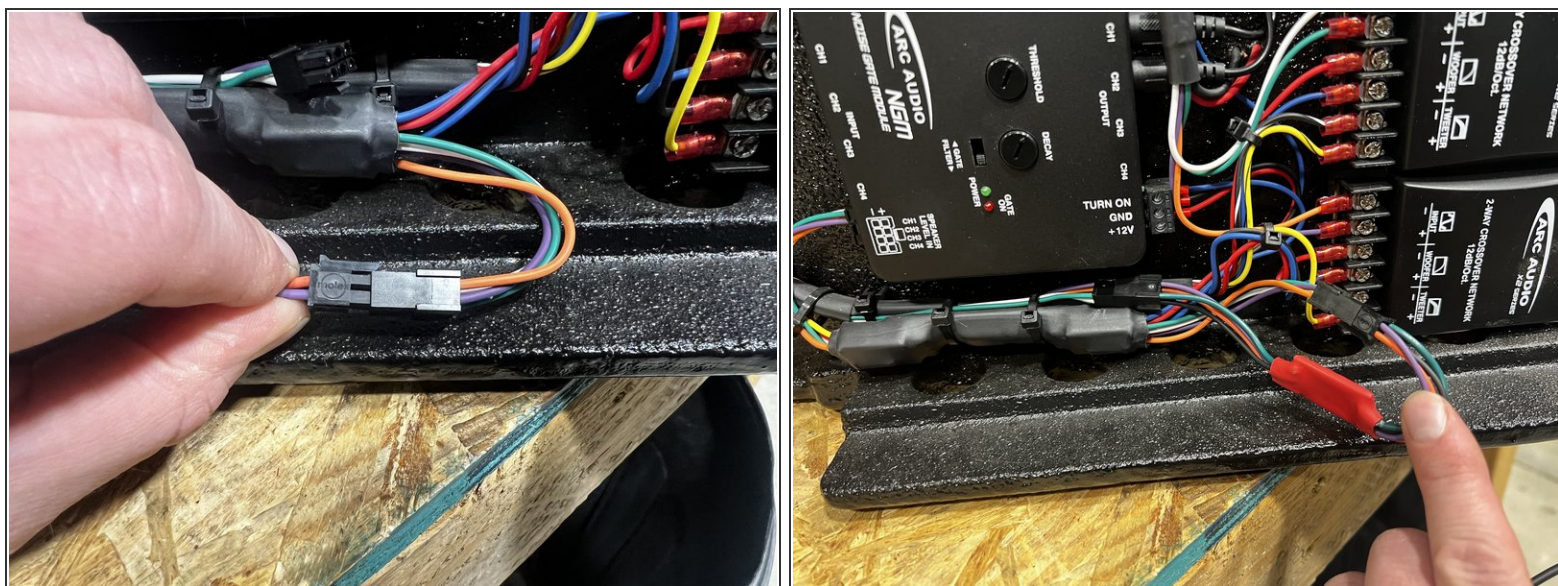
- We will need to access the front of the BeatBox to install the resistor pack.
- Lift up and support the front of the BeatBox, and support the front using a suitable chock. We are using a small piece off wood in the image placed against the seat base and under the front lip of the BeatBox.
- ⓘ Take care when lifting the front of the BeatBox, as we do not want to damage the BeatBox.
- You can also remove the BeatBox from the vehicle and set on a table or bench. You would need to disconnect the power wires from the amplifier, and disconnect all the harness' as well to remove.
- ⚠ If you have a fire extinguisher or any other accessory secured to the back of the seat base via screws, you may need to remove the screws if they are long and protrude into the sub box!

Step 9 — Resistor Pack Install



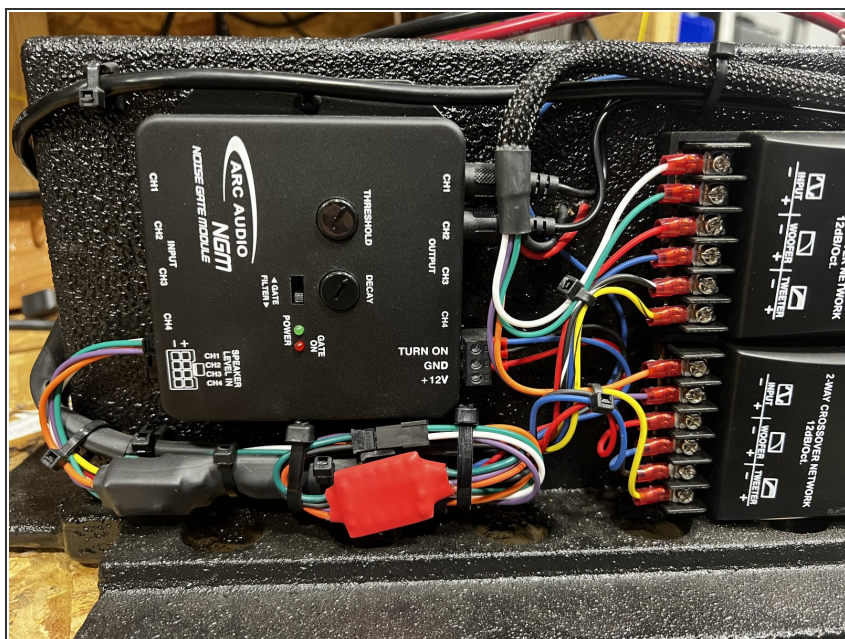
- ① This is shown on a work bench for clarity purposes.
- ① The BeatBox shown in the images is a prototype, so some wire routing MAY be slightly different on production units than what is shown in the images, but the procedure is exactly the same.
- Located the 6 pin connector below the NGM1 and next to the crossovers. The wire colors are Purple, Green, Orange, and White.
- Depress the locking tab and pull this connector apart.
- ① The connector may be positioned behind the relay module (the long skinny module secured below the NGM1)

Step 10 — Resistor Pack Install



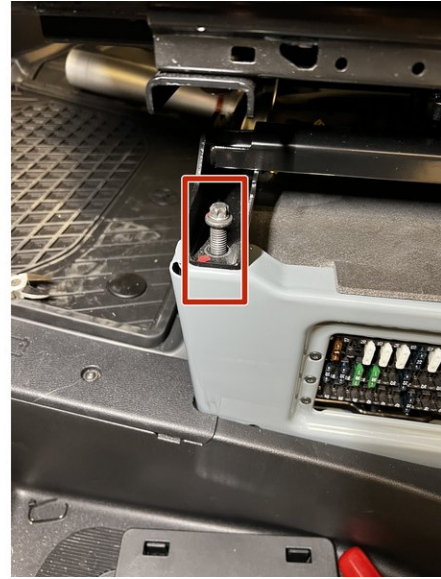
- The resistor pack has a 6 pin connector on each end, a male and female end.
- Plug each side of the resistor pack into the corresponding (male or female) connector on the harness we just disconnected on the BeatBox.
- The resistor pack can only be plugged in one way inline.

Step 11 — Securing the Resistor Pack



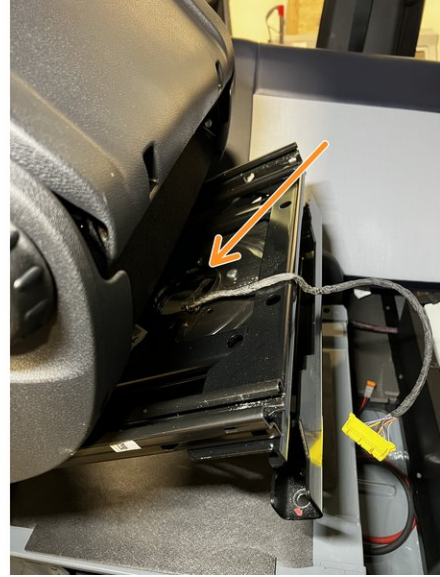
- Use the provided zip ties to secure the resistor pack to the existing harness as shown.
- Avoid placing the zip ties directly over the body of the resistor pack. If the zip ties are over tightened you can damage the resistor board. Cut the tails off the zip ties.

Step 12 — Installing Seats Back Into Van



- Lift the seat into the van, and place on the seat base.
- ⓘ Take care not to scratch the seat base when placing seat into van. Masking tape can be used on the seat base to help avoid damage.
- Start the front 2 seat bolts into the base by hand, only a few turns.

Step 13 — Installing Seat Bolts and Seat Wire Harness



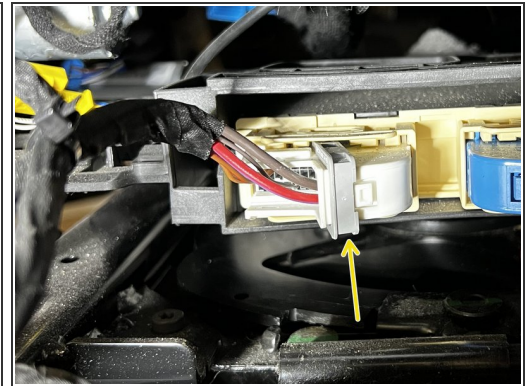
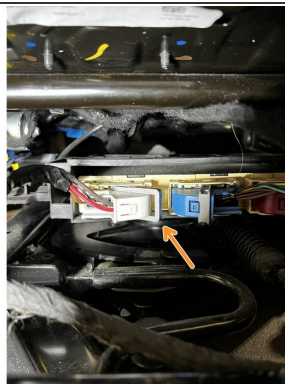
- With the front 2 bolts started, tilt the seat forward.
 - Feed the seat wiring harness through the center hole up through the seat swivel.
 - Lower the seat back onto the base, and start the rear 2 seat bolts by hand.
- ⚠ Take care to start the seat bolts by hand to avoid cross threading the bolt into the nut on the seat base.

Step 14 — Final Torque of Seat Bolts



- With all the seat bolts started, tighten all the bolts and torque to 29 ft/lbs.
- ⓘ Seat will need to be swiveled to access all the seat bolts.

Step 15 — Seat Wiring Harness - Power Seats



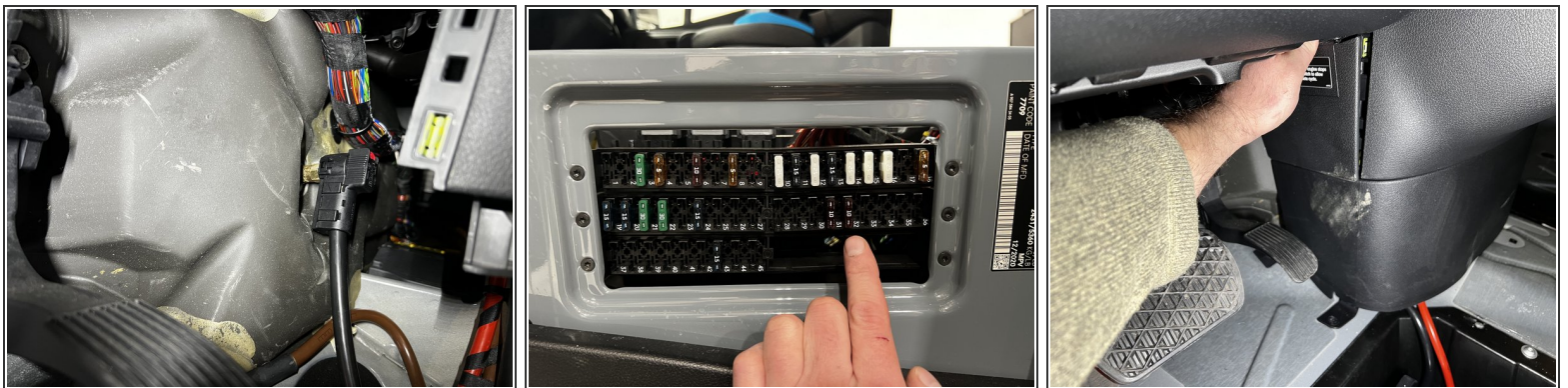
- ⓘ If your van does not have power seats, skip to step 5
- Route the power seat harness to the control module under the seat, along with the seat wire harness.
- Insert the plug into the module. As the plug is inserted, the locking lever will start to close.
- Once the plug is fully seated, the lever can be moved into the locked position.

Step 16 — Seat Wire Harness Routing



- Route seat wire harness along seat rails, securing to the seat rail.
 - Connect the plug from the seat wire harness into the connector on the seat.
 - Secure the excess wire to the seat rail using a zip tie and trim zip tie tail.
- ⚠ Ensure there is enough slack in the wire harness to allow the seat to slide forward and backwards, as well as rotate.

Step 17 — VS30 Battery Reconnection



- Place the battery disconnect terminal back onto the ground stud.
- Push the battery disconnect terminal onto the stud until it clicks. Give the terminal a tug to ensure it is fully seated.
- Reinstall fuse #32
- Reinstall the battery disconnect access cover.

